

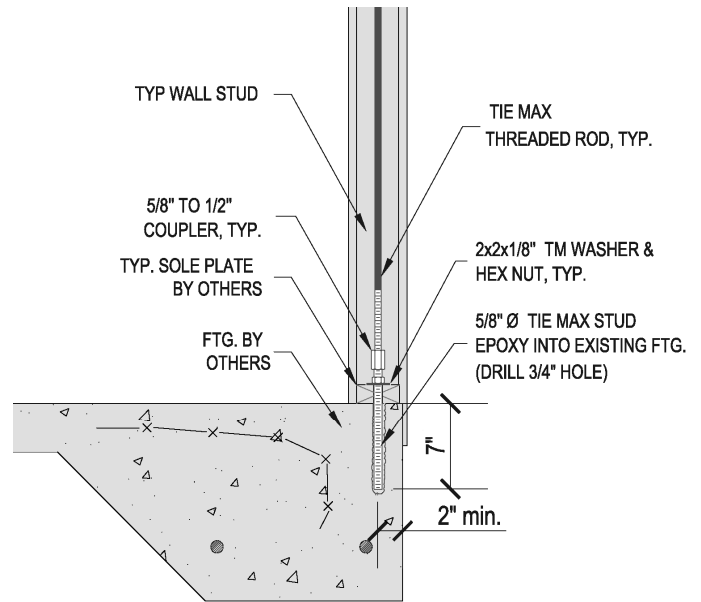


# TIE MAX STUD Retrofit Application

*Use only approved epoxies supplied by Fastening Specialists, Inc.*

## TIE MAX STUD ANCHOR PLACEMENT

1. Determine the location of the TIE MAX STUD.  
Refer to shop drawing for location and embedment depth.
2. Drill a 3/4-inch diameter by 7-inch deep (typical) hole in the concrete.
  - a) Edge placement minimum of 2 inches from edge to center of hole.
  - b) Field placement shall exceed 7 inches from edge to center of hole.
3. Clean hole with compressed air or puffer to clear dust and debris.
4. Brush hole with properly sized hole brush.
5. Clean hole with compressed air or puffer again.
6. Inject epoxy into hole, filling the hole 1/2 full starting from the bottom.
7. Insert the TIE MAX STUD with a twisting motion (to insure full thread coverage) until stud hits the bottom of the hole.

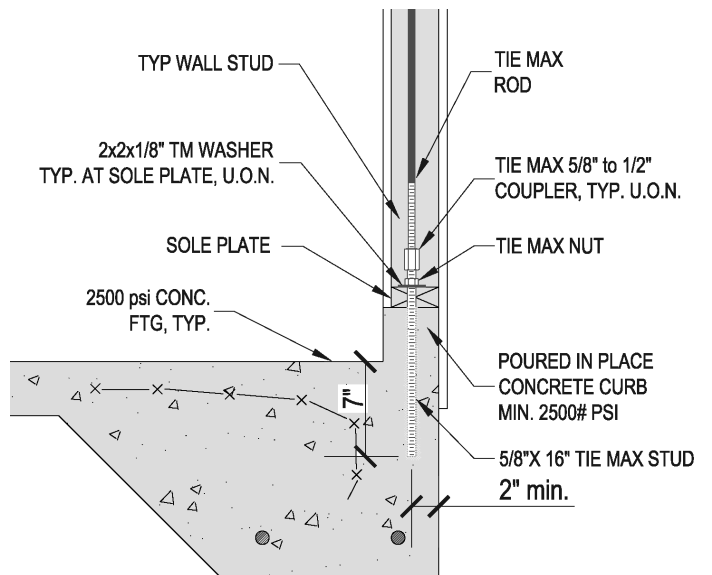


*Note: If epoxy does not appear at the top of the hole when the TIE MAX STUD is inserted, remove TIE MAX STUD, apply additional epoxy to the hole, and reinsert TIE MAX STUD with a twisting motion.*

8. Allow epoxy to set as per manufacturer's instructions before applying any load.

## TIE MAX STUD IN CURB

1. Determine the location. Refer to shop drawings.
2. Drill a 3/4-inch diameter hole to a depth of not less than 7" below finish floor.
3. Follow steps 3 - 8 above.



***TIE MAX is a Structural Tie Down System. All components must be of TIE MAX manufacture.***